

Ø 22/25 mm Key Selector Switches



S2KR Series CATALOG





For your safety, read and follow the considerations written in the instruction manual, other manuals and Autonics website.





The specifications, dimensions, etc. are subject to change without notice for product improvement. Some Models may be discontinued without notice.

Features

- Smooth operation
- High electrical conductivity
- Long-lasting durability

Specifications

| Series | S2KR Series |
|---|--|
| Actuation angle | 2-position: [Spring return] $60^\circ \pm 5^\circ$ [Maintained] $90^\circ \pm 5^\circ$ 3-position: [Spring return] $60^\circ \pm 5^\circ$ [Maintained] $90^\circ \pm 5^\circ$ |
| Actuation force | 0.5 kgf (4.9 N) (per 1 contact) |
| Installation | Extended |
| Shock | 300 m/s ² (\approx 30 G) in each X, Y, Z direction for 3 times |
| Shock (malfunction) | 100 m/s ² (\approx 10 G) in each X, Y, Z direction for 3 times |
| Vibration | 1.5 mm amplitude at frequency of 10 to 55 Hz (for 1 min) in each X, Y, Z direction for 2 hours |
| Vibration (malfunction) | 1.5 mm amplitude at frequency of 10 to 55 Hz (for 1 min) in each X, Y, Z direction for 10 minutes |
| Mechanical life cycle (control unit life cycle) | \geq 100,000 operations (20 operations/min) |
| Ambient temperature | -15 to 55 °C, storage: -25 to 65 °C (no freezing or condensation) |
| Ambient humidity | 35 to 85 %RH, storage: 35 to 85 %RH (no freezing or condensation) |
| Protection structure | Control unit: IP52 (IEC standard) |
| Approval | CE     |
| Control unit weight | \approx 37 g |
| Housing weight | \approx 7 g |

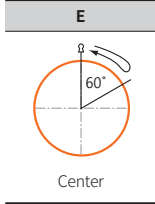
| Contact blocks | |
|------------------------|--|
| Power supply / current | 110 VAC~ / 10 A, 250 VAC~ / 6 A |
| Dielectric strength | 2,500 VAC~ 50/60 Hz for 1 minute |
| Insulation resistance | \geq 1,000 M Ω (500 VDC= megger) |
| Contact resistance | \leq 20 m Ω (initial) |
| Electrical life cycle | \geq 100,000 operations (20 operations/min) |
| Contact material | AgNi10 |
| Approval | CE     |
| Weight | Modular type: \approx 10 g, Singular type: \approx 11 g |

Sold Separately

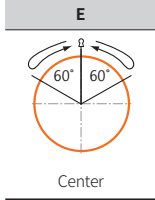
- Contact blocks (SA□-C□□)
- Switch enclosures (SA-□B□)
- Locking handle (SA□-LH)
- Switch washer (SA-SW□)

Key Removal Position

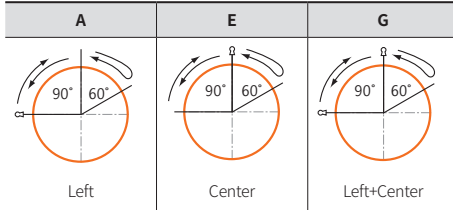
2-position spring return



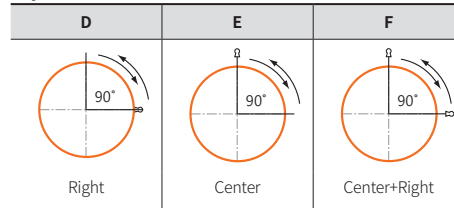
3-position two-way spring return



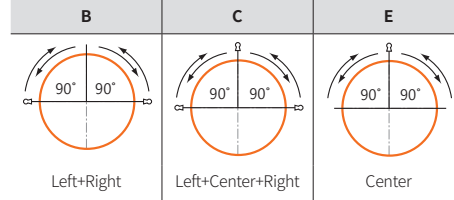
3-position right spring return



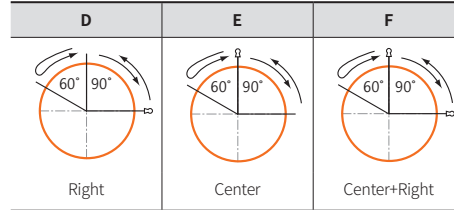
2-position Maintained



3-position Maintained



3-position left spring return



Ordering Information

This is only for reference. For selecting the specified Model, follow the Autonics website.

Model is based on control unit+block combination. Control units or blocks are sold separately. In case of block, refer to control switch accessories.

| | | | | | | |
|--------------|---|----------|----------|----------|----------|----------|
| S2KR | - | ① | ② | ③ | ④ | ⑤ |
| Control unit | | | | | Block | |

① Operation

- 1: 2-position spring return
- 2: 2-position maintained
- 3: 3-position two-way spring return
- 4: 3-position maintained
- 5: 3-position right spring return
- 6: 3-position left spring return

② Key removal position

Refer to Key Removal Position.

③ Color

- K: Black
- S: Sliver

④ Contact block

- A: 1 A contact
- 2A: 2 A contacts
- B: 1 B contact
- 2B: 2 B contacts
- AB: 1 A contact, 1 B contact

⑤ Block

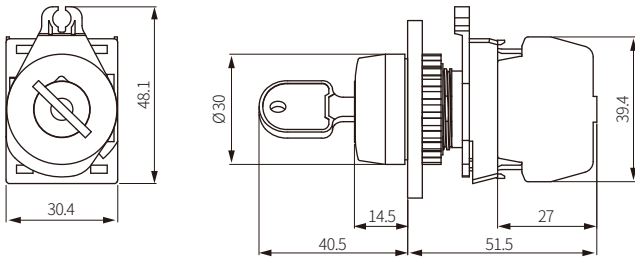
- No mark: Singular type
- M: Modular type

| Model | Contact block | | LED block | |
|---------------|---------------|-----------|---------------|------------|
| | A contact | B contact | AC/DC voltage | AC voltage |
| S2KR-1E□A(M) | 1 | - | - | - |
| S2KR-1E□2A(M) | 2 | - | - | - |
| S2KR-1E□B(M) | - | 1 | - | - |
| S2KR-1E□2B(M) | - | 2 | - | - |
| S2KR-1E□AB(M) | 1 | 1 | - | - |
| S2KR-2D□A(M) | 1 | - | - | - |
| S2KR-2D□2A(M) | 2 | - | - | - |
| S2KR-2D□B(M) | - | 1 | - | - |
| S2KR-2D□2B(M) | - | 2 | - | - |
| S2KR-2D□AB(M) | 1 | 1 | - | - |
| S2KR-2E□A(M) | 1 | - | - | - |
| S2KR-2E□2A(M) | 2 | - | - | - |
| S2KR-2E□B(M) | - | 1 | - | - |
| S2KR-2E□2B(M) | - | 2 | - | - |
| S2KR-2E□AB(M) | 1 | 1 | - | - |
| S2KR-2F□A(M) | 1 | - | - | - |
| S2KR-2F□2A(M) | 2 | - | - | - |
| S2KR-2F□B(M) | - | 1 | - | - |
| S2KR-2F□2B(M) | - | 2 | - | - |
| S2KR-2F□AB(M) | 1 | 1 | - | - |
| S2KR-3E□2A(M) | 2 | - | - | - |
| S2KR-3E□2B(M) | - | 2 | - | - |
| S2KR-3E□AB(M) | 1 | 1 | - | - |
| S2KR-4B□2A(M) | 2 | - | - | - |
| S2KR-4B□2B(M) | - | 2 | - | - |
| S2KR-4B□AB(M) | 1 | 1 | - | - |
| S2KR-4C□2A(M) | 2 | - | - | - |
| S2KR-4C□2B(M) | - | 2 | - | - |
| S2KR-4C□AB(M) | 1 | 1 | - | - |
| S2KR-4E□2A(M) | 2 | - | - | - |
| S2KR-4E□2B(M) | - | 2 | - | - |
| S2KR-4E□AB(M) | 1 | 1 | - | - |
| S2KR-5A□2A(M) | 2 | - | - | - |
| S2KR-5A□2B(M) | - | 2 | - | - |
| S2KR-5A□AB(M) | 1 | 1 | - | - |
| S2KR-5E□2A(M) | 2 | - | - | - |
| S2KR-5E□2B(M) | - | 2 | - | - |
| S2KR-5E□AB(M) | 1 | 1 | - | - |
| S2KR-5G□2A(M) | 2 | - | - | - |
| S2KR-5G□2B(M) | - | 2 | - | - |
| S2KR-5G□AB(M) | 1 | 1 | - | - |
| S2KR-6D□2A(M) | 2 | - | - | - |
| S2KR-6D□2B(M) | - | 2 | - | - |
| S2KR-6D□AB(M) | 1 | 1 | - | - |
| S2KR-6E□2A(M) | 2 | - | - | - |
| S2KR-6E□2B(M) | - | 2 | - | - |
| S2KR-6E□AB(M) | 1 | 1 | - | - |
| S2KR-6F□2A(M) | 2 | - | - | - |
| S2KR-6F□2B(M) | - | 2 | - | - |
| S2KR-6F□AB(M) | 1 | 1 | - | - |

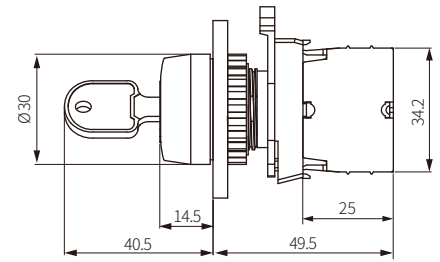
Dimensions

- Unit: mm, For the detailed drawings, follow the Autonics website.
- Panel thickness: ≤ 6 mm

■ S2KR-□ (singular type block)



■ S2KR-□ M (modular type block)



■ Panel cut-out

<Mounting round: $\varnothing 25$ >

